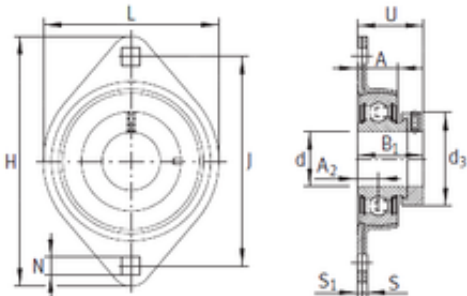




INA PCSLT30 bearing units



PCSLT30 Bearing 2D drawings and 3D CAD models

Bearing No. PCSLT30

Bore Diameter	30 mm
d	30 mm
S1	3,5 mm
U	29 mm
d3	42,5 mm
A	16 mm
B1	26,5 mm
H	112,5 mm
J	90,5 mm
L	84 mm
N	11,5 mm
S	2,5 mm
A2	9 mm
Category	Flange Block Bearings
Inventory	0.0
Manufacturer Name	SCHAEFFLER GROUP
Minimum Buy Quantity	N/A
Weight / Kilogram	0.3
Product Group	M06110
Number of Mounting Holes	2
Mounting Method	Eccentric Collar
Housing Style	2 Bolt Flange Block
Rolling Element	Ball Bearing
Housing Material	Stamped Steel
Expansion / Non-expansion	Non-expansion
Mounting Bolts	11.5 Millimeter



## LAD Bearing International Trade Co., ...

Relubricatable	No
Insert Part Number	RALE30NPPB
Seals	Double Lip Contact
Housing Configuration	2 Piece Split
Pilot Configuration	No Pilot
Inch - Metric	Metric
Long Description	2 Bolt Flange Block; 30MM Bore; 90.5MM Bolt Circle; 90.5MM Bolt Spacing; 2 Piece Split; Eccentric Collar Mount; Stamped Steel; Ball Bearing; 26.5MM Length Thru Bore; No Relubricatable; Double Lip Cont
Other Features	Single Row   With Set Screw
Category	Flange Block
UNSPSC	31171501
Harmonized Tariff Code	8483.20.40.40
Noun	Bearing
Keyword String	Flanged
Manufacturer URL	<a href="http://www.ina.com">http://www.ina.com</a>
Manufacturer Item Number	PCSLT30
Weight / LBS	0.661
Cartridge Pilot Diameter	0 Inch   0 Millimeter
Bore	1.181 Inch   30 Millimeter
Nominal Bolt Circle Diameter Round	3.6 Inch   90.5 Millimeter
Length Thru Bore	1.043 Inch   26.5 Millimeter
Cartridge Pilot Depth	0 Inch   0 Millimeter
Bolt Spacing	3.563 Inch   90.5 Millimeter