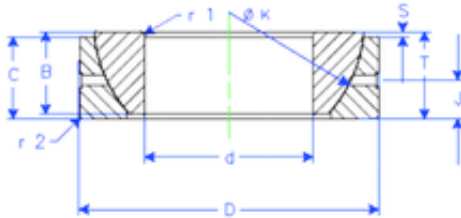




LAD Bearing International Trade Co., ...

Enduro GE 35 SX plain bearings



GE 35 SX Bearing 2D drawings and 3D CAD models

Bearing No. GE 35 SX

Size	35x62x18 mm
Bore Diameter	35 mm
Outer Diameter	62 mm
Width	18 mm
d	35 mm
D	62 mm
T	18 mm
B	18 mm
C	16 mm
r1 min.	1 mm
r2 min.	1 mm
J	9 mm
K	56 mm
S	2,1 mm
Weight	0,268072872 Kg
Basic dynamic load rating (C)	78 kN